

## Press release

Mood of the week : Spa

Charlotte Champion, Patricia ERBELDING, Didier Fournet, Antoine Gaussin, Tim Hall, Yanne Kintgen, Mikael Lafontan, Cécile Plaisance, Jeff Robb, Mario Sughi, Eva Ullrich

From 16 May 2022 to 22 May 2022



## Press Release

Being pampered, taking care of your body and soul in soothing and beautiful places, giving in to the "wellness" trend: sometimes you have to take the time to do yourself good. This week, after traveling for weeks to present our artists at fairs in very different time zones, we are in the mood for serenity. Here is a selection of works that provide the same relaxing effects as the best spas in the world. As once put by Beaudelaire: "There, all is order and beauty, luxury, peace and pleasure".

## Exhibited Artworks



### **CHARLOTTE CHAMPION**

*La quinocéenne*, 2012

Bronze and stainless

12 x 34 x 2 in (31 x 85 x 5 cm)

Edition of 8 ex

Signé et numéroté

INV Nbr. chac\_015

## Exhibited Artworks



**JEFF ROBB**

*Rectangle 1, 2020*

3D Lenticular print, white wooden frame

25.5 x 31.5 in (65 x 80 cm)

Edition of 12 ex

Signé

INV Nbr. jefr\_023

## Exhibited Artworks



**JEFF ROBB**

*Rectangle 2, 2020*

3D Lenticular print, white wooden frame

25.5 x 31.5 in (65 x 80 cm)

Edition of 12 ex

Signé

INV Nbr. jefr\_024

## Exhibited Artworks



### **ANTOINE GAUSSIN**

*Northern Umbrellas Again*, 2020

Photo printed on rag paper, laminated on anodised aluminium - White wooden frame  
43 x 43 in (110 x 110 cm)

Edition of 10 ex

INV Nbr. gaua\_015

## Exhibited Artworks



### **DIDIER FOURNET**

*Venise Jour #14*, 2021

Photography, Diasec and aluminium frame

39 x 39 in (100 x 100 cm)

Edition of 7 ex

Signé et numéroté

INV Nbr. foud\_063

## Exhibited Artworks



**TIM HALL**

*Sandwich*, 2018

Lambda print pasted with diasec, framed

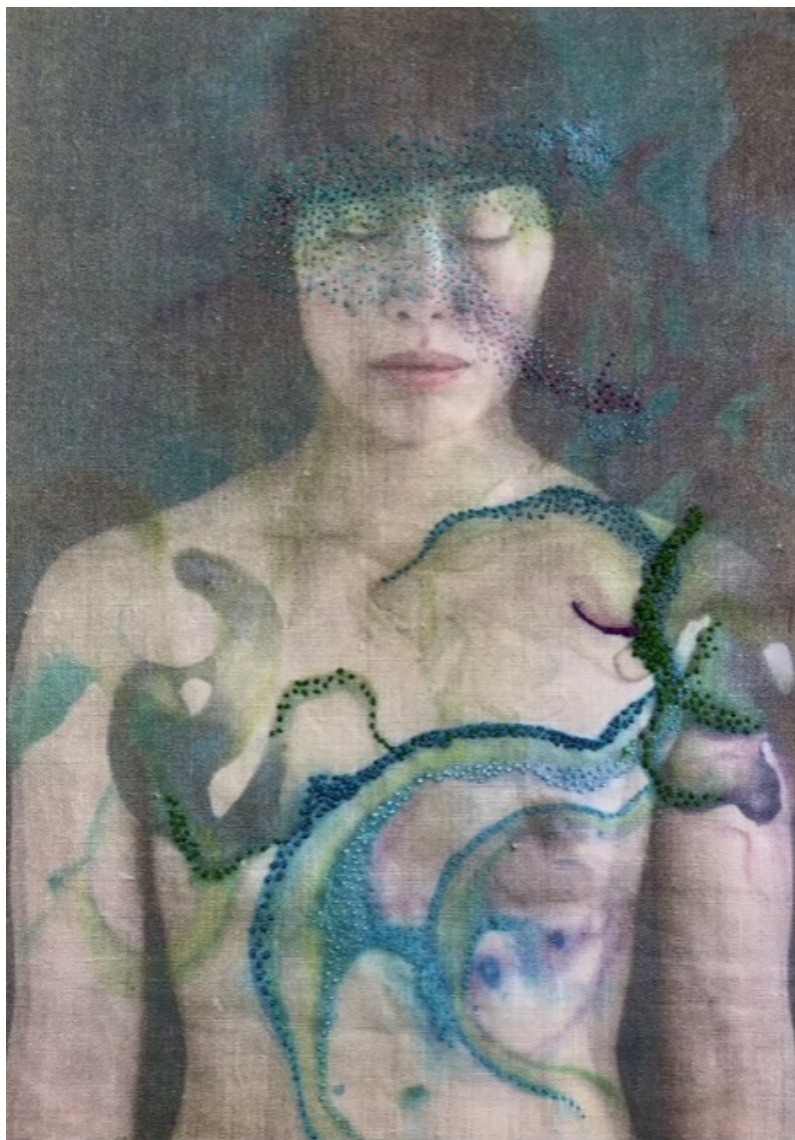
39 x 39 in (100 x 100 cm)

Edition of 10 ex

INV Nbr. halt\_025



## Exhibited Artworks



**YANNE KINTGEN**

*Poésie 31, 2022*

Embroidery

11.4 x 8 in (29 x 20.5 cm)

Frame: 16.5 x 12.5 in

Unique artwork

INV Nbr. Kiny\_523

## Exhibited Artworks



**YANNE KINTGEN**

*Bory 1*, 2015

Printing on barium paper 310g, framed

47 x 31 in (120 x 80 cm)

Edition of 8 ex

Signé et numéroté

INV Nbr. Kiny\_450

## Exhibited Artworks



### **ANTOINE GAUSSIN**

*Dreamlike perspective*, 2018

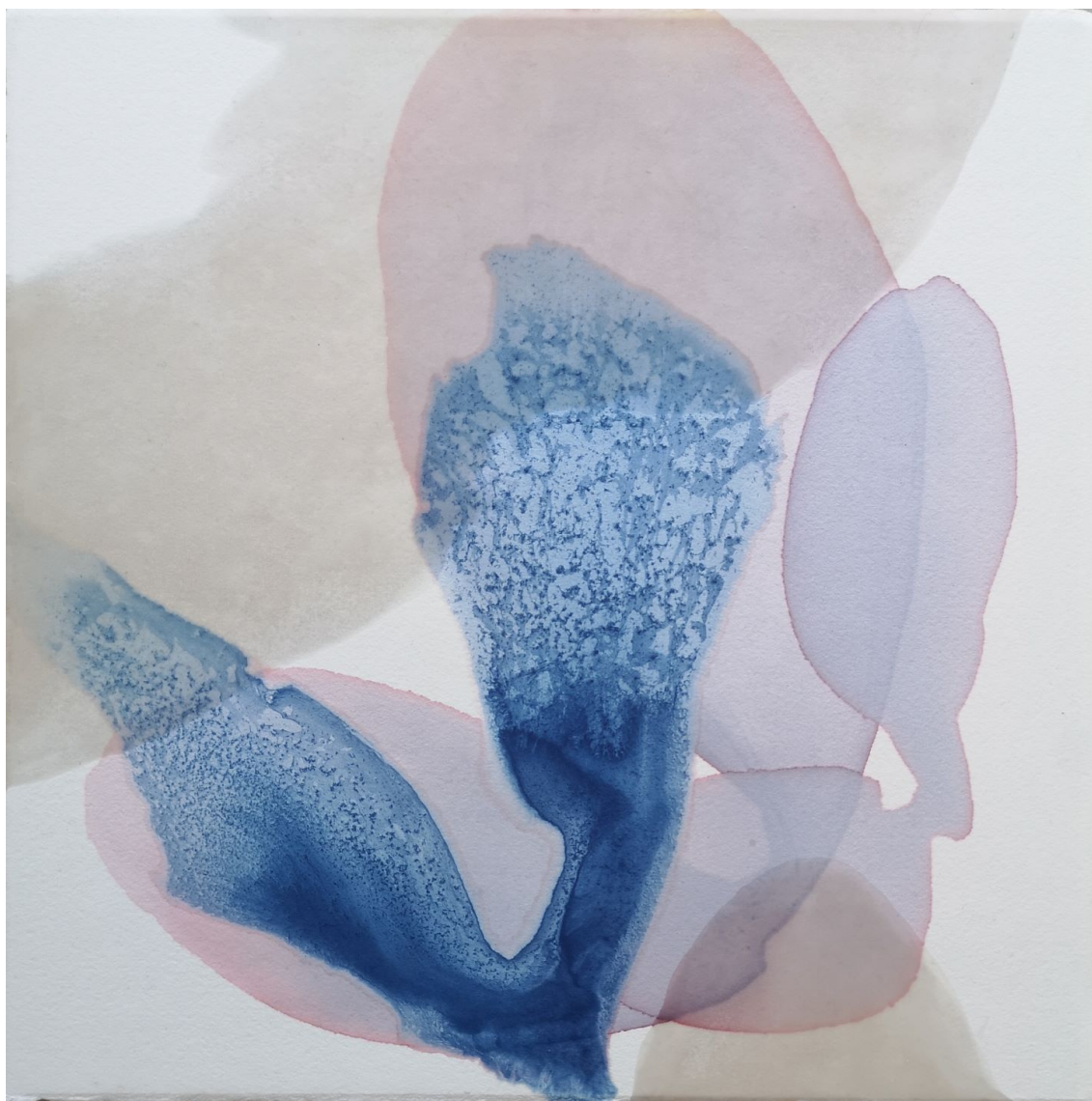
Photo printed on rag paper, laminated on anodised aluminium - (2 other formats available: 35.4 x 75 in / 39 x 85 in)

27.5 x 67 in (70 x 170 cm)

Edition of 10 ex + 2 EA

INV Nbr. gaua\_013

## Exhibited Artworks



**PATRICIA ERBELDING**

*Blues 16*, 2021

Blues

Ink and wax on paper mounted on wood, framed

11,8 x 11,8 in (30 x 30 cm)

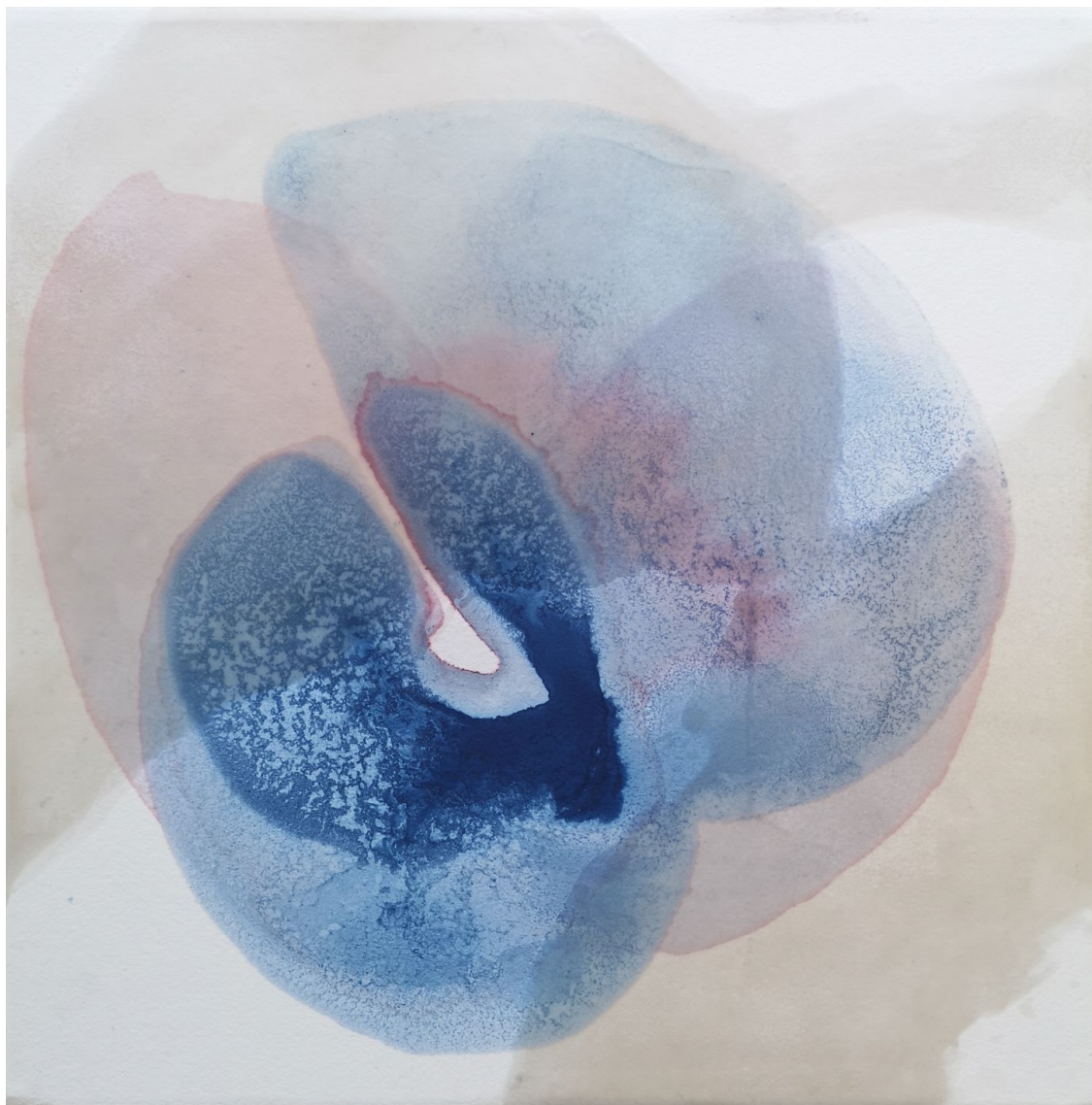
Frame: 14 x 14

Unique artwork

Signé

INV Nbr. erbp\_320

## Exhibited Artworks



**PATRICIA ERBELDING**

*Blues 17*, 2021

Blues

Ink and wax on paper mounted on wood, framed

11,8 x 11,8 in (30 x 30 cm)

Frame: 14 x 14

Unique artwork

Signé

INV Nbr. erbp\_321

## Exhibited Artworks



**MIKAEL LAFONTAN**

*Pachena Lake*

Lambda print on dibon  
47 x 59 in (120 x 150 cm)

Edition of 10 ex + 3 EA

Signé et numéroté

INV Nbr. lafm\_005

## Exhibited Artworks



**EVA ULLRICH**

*Tortola, 2022*

Acrylic on Canvas, multiple layers using brushes, squeegees and sponges, framed  
51 x 43 in (130 x 110 cm)

Unique artwork

Signé

INV Nbr. ullr\_014

## Exhibited Artworks



**MARIO SUGHÌ**

*#1139C, 2020*

Digital print

27.5 x 27.5 in (70 x 70 cm)

Edition of 10 ex

Signé et numéroté

INV Nbr. Sugm\_013