

## Press release

Mood of the week : Body

Ana D. & Noora K., Silvia CALMEJANE, Marcel Ceuppens, Marine DE SOOS, Richard Heeps, Yanne Kintgen, Cécile Plaisance, Jeff Robb, Nick Veasey

From 12 September 2022 to 18 September 2022



## Press Release

The human body is a great inspiration to artists, designers and more broadly to all those interested in form. From the academic nude to allegories, via photography, this protean nature, both unique and multiple, which evokes the timeless, has always been present in the history of art. In our selection of the week, discover the human body seen by our artists; let's get physical!

## Exhibited Artworks



### **YANNE KINTGEN**

*Tracy 1*

Printing on barium paper 310g, framed

31 x 24 in (80 x 60 cm)

Edition of 8 ex

Signé et numéroté

INV Nbr. Kiny\_459

## Exhibited Artworks



### **YANNE KINTGEN**

*Gaby 1*

Printing on barium paper 310g, framed

47 x 31 in (120 x 80 cm)

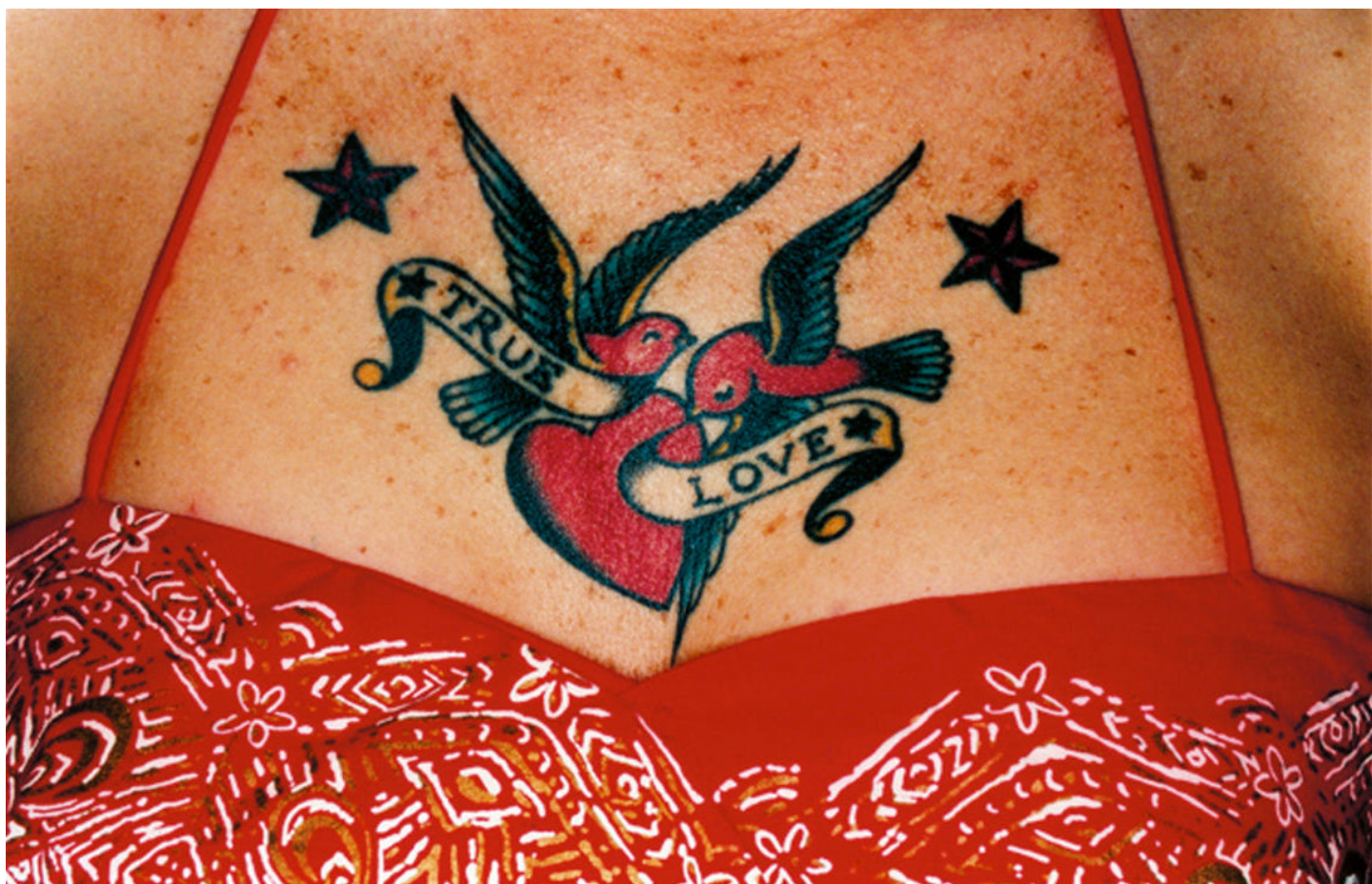
Edition of 8 ex

Signé et numéroté

INV Nbr. Kiny\_451



## Exhibited Artworks



### **RICHARD HEEPS**

*Shelley's 'True Love' Tattoo, Hemsby, 2004*

Hand-printed from a negative, framed

30 x 40 in (61 x 93 cm)

Frame: 33 x 44 in

Edition of 25 ex

INV Nbr. heer\_185

## Exhibited Artworks



**JEFF ROBB**

*Nightfall 18, 2019*

3D Lenticular print, white wooden frame

27 x 21 in (69 x 53 cm)

Edition of 12 ex

Signé

INV Nbr. jefr\_019



## Exhibited Artworks



### CÉCILE PLAISANCE

*Freedom*, 2019

Lens

Lenticular print, black wooden frame

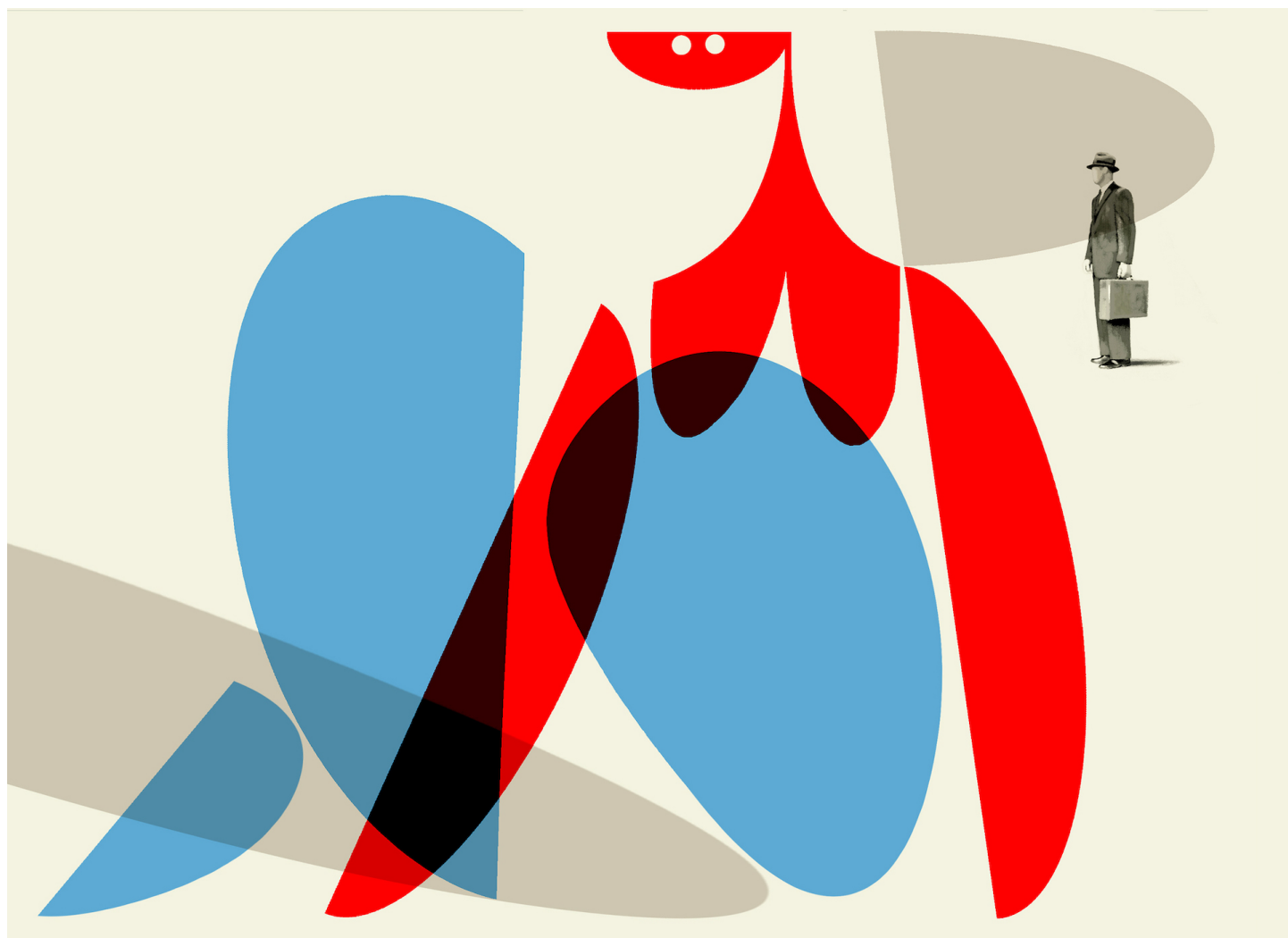
27 x 22 inch (70 x 57 cm)

Edition of 8 ex + 2 EA

Signé et numéroté

INV Nbr. plac\_287

## Exhibited Artworks



**MARCEL CEUPPENS**

*Man with Model*, 2014

Archival pigment print, framed  
30 x 22 in (76 x 55 cm)

Frame: 35 x 28 in

Edition of 15 ex

Signé et numéroté

INV Nbr. ceum\_003A



## Exhibited Artworks



**MARINE DE SOOS**

*Palabres*, 2018

Bronze

59 x 31,4 x 25,5 in (150 x 80 x 65 cm)

Edition of 8 ex

Signé et numéroté

INV Nbr. desm\_0102

## Exhibited Artworks



**ANA D. & NOORA K.**

*Moveo Lucidum*, 2022

Lenticular print, framed

31 x 23 in (80 x 60 cm)

Frame: 33 x 24 in

Edition of 8 ex + 2 EA

Signé et numéroté

INV Nbr. anad\_003A